

Consultation on proposed changes to the admission arrangements for Marshland High School at School Road, West Walton, Wisbech, Norfolk, PE14 7HA;

Change of catchment area, effective from September 2026

Our proposal

West Norfolk Academies Trust in conjunction with Norfolk County Council are proposing to change the admissions arrangements by altering the catchment area of Marshland High School, effective from September 2026.

Why are we consulting on a change of catchment area?

You will have received this consultation as you are a stakeholder and may be affected directly or indirectly by the change. We would like to seek your views on the proposal as part of our ongoing commitment to collaboration and transparency.

West Norfolk Academies Trust is the Admissions Authority for Marshland High School, however West Norfolk Academies Trust and the Local Authority, Norfolk County Council periodically review catchment areas to ensure they meet the needs of the area.

Through the recent annual admission rounds, there have been significant issues for children living within the catchment area of Downham Market Academy not being offered places at their local school. This has been particularly evident for those living in the areas furthest from the Academy.

Where preference is not met, the Local Authority has a duty to offer a school place. Children are offered the nearest school with a place available; as a rural locality, alternatives have been some distance from home addresses involving home to school transport in most cases.

With the uncertainty for families, Local Authority Officers have looked at options, working with Academy Trusts in the area to seek alternative admission arrangements and therefore West Norfolk Academies Trust proposes to change the catchment area of Marshland High School to:

- Respond to changes in pupil population and balance enrolment across neighbouring secondary schools, ensuring schools are not over or under-subscribed; optimising facilities and resources which support better learning environments.
- Reduce the distance that pupils need to travel to their local school, supporting reduction in carbon footprint and encouraging community and parental engagement.

This consultation is linked to a proposal from King's Lynn Academy, part of Eastern Multi-Academy Trust and Downham Market Academy, part of Eastern Learning Alliance. Please see their respective consultations available on their websites.

It is proposed that these plans will become effective from September 2026, meaning pupils applying for places in 2026-2027 will be under the new admissions arrangements.

The changes will not affect pupils already attending the school.

This consultation is in line with the [School Admissions Code 2021](#).

What is a catchment area?

A catchment area is a defined geographical area that serves a particular school. In most cases, the area is used to provide priority for admission to a particular school. In planning the layout of a catchment area, the Admissions Authority, in this case West Norfolk Academies Trust, should try to ensure that the parent would have reasonable expectation for priority to that school.

What are the proposed changes to the catchment area / admission arrangements?

The proposal is to change the catchment in the following way:

Marshland High School

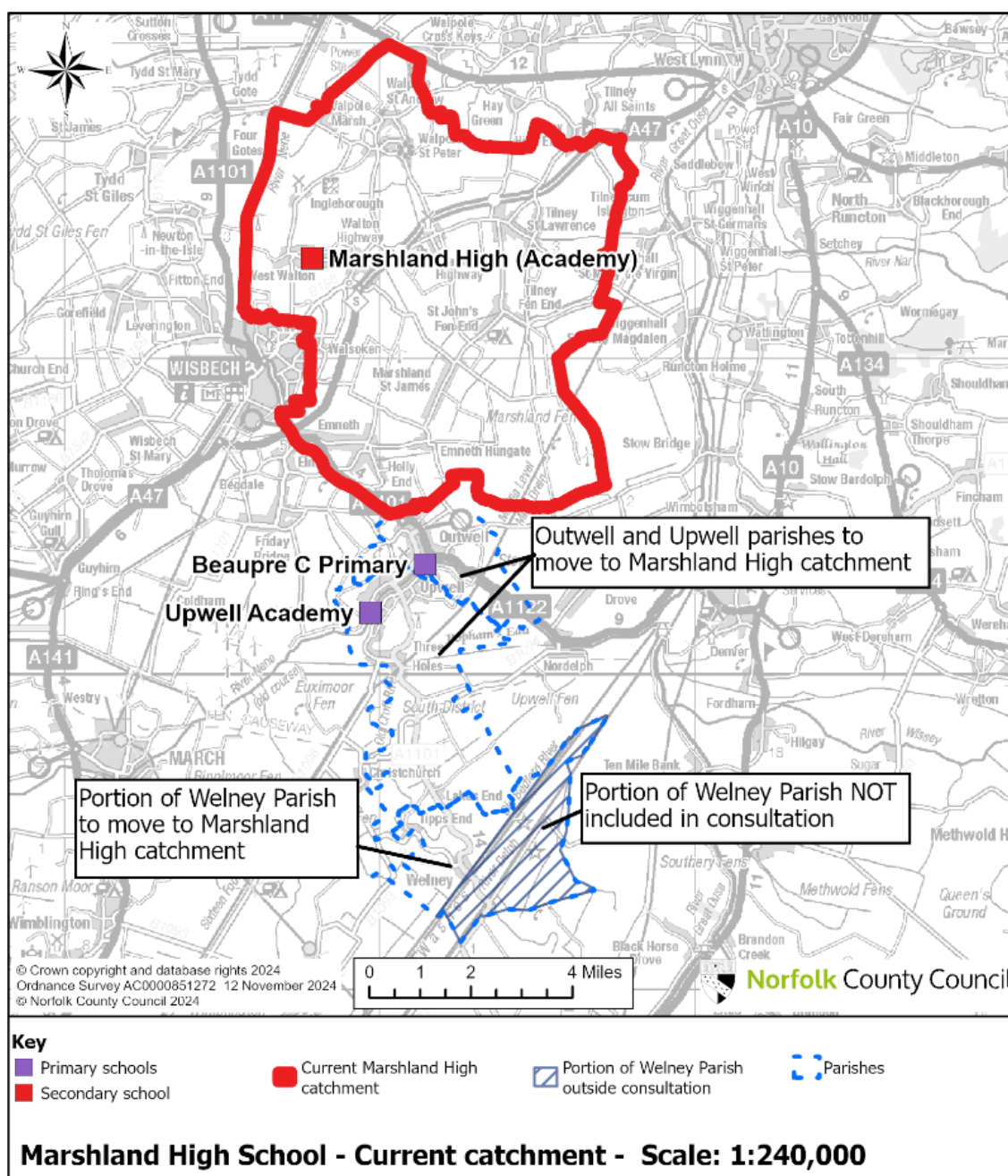
The catchment area for Marshland High School will be expanded to include the parishes of Upwell and Outwell.

There will be no change to the Planned Admission Number (PAN).

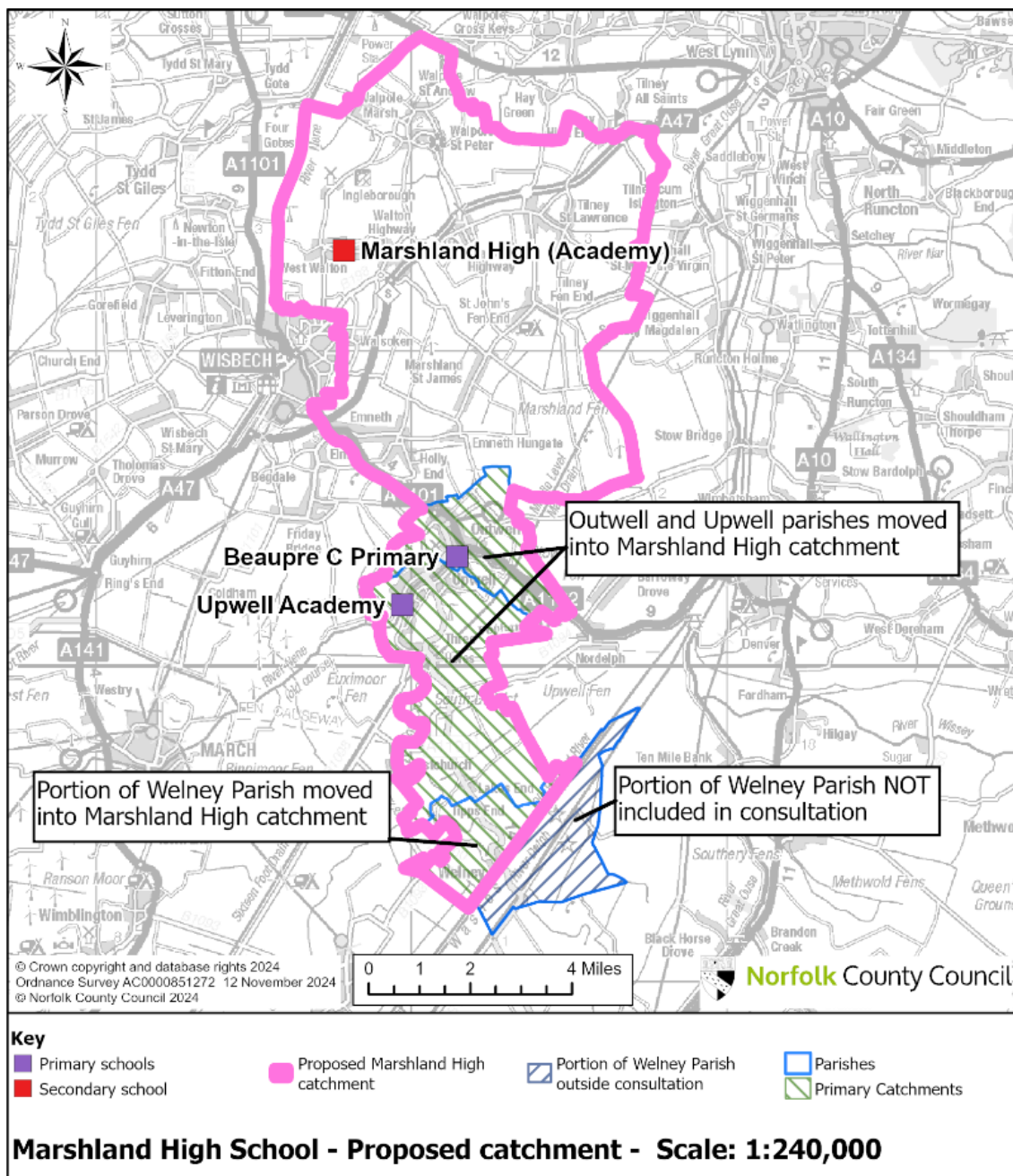
The school is proposing to re-order one of the existing oversubscription criteria. "Priority will be given to children with siblings at the school living permanently at the same address. Priority will equally be given to siblings of former pupils". The proposal is to change this from priority 3 to priority 6. You can view the full policy on [Marshland High School's website](#).

Admission Authorities must ensure that their arrangements will not disadvantage unfairly, either directly or indirectly, a child from a particular social or racial group.

Current catchment areas for Marshland High School



Proposed catchment areas for Marshland High School



How can I have my say?

Consultation on changes to admissions arrangements are required to be open for a period of six weeks in term time, therefore the consultation will run from 18th November 2024 to 15th January 2025.

There are several ways you can share your views with us:

Come and talk to us - There will be a meeting for parents, carers and other interested members of the community:

- 12th December at 4pm, at Marshland High School.

Tell us your views by completing:

- The short google form online survey <https://forms.gle/CfCAqGURCcBifMYh8>
- the attached form and handing it into the school office.
- Or by email to consultation@marshlandhigh.co.uk
- Or write to Marshland High School c/o Admissions, School Road, West Walton, Wisbech, PE14 7HA

What happens next

After this consultation ends on 15th January 2025, West Norfolk Academies Trust in collaboration with Norfolk County Council will review the results of the consultation. After considering the findings, alongside the consultations linked with King's Lynn Academy and Downham Market Academy, the Executive Director of Children's Services, will recommend to West Norfolk Academies Trust whether to change the catchment area of Marshland High School.

The outcome of the consultation will be made public between 16th and 31st January 2025 in a determination notice on Marshland High School's website.

Please see form below

All responses must be returned by 12 noon on 15th January 2025

Consultation on the change of catchment area for Marshland High School, School Road, West Walton, Wisbech, Norfolk, PE14 7HA, from September 2026

Please let us know what you think of our proposals:

How far do you agree or disagree with our proposal to change the catchment area of Marshland High School, from September 2026? Please tick a box.

Strongly agree Agree Neither agree or disagree

Disagree Strongly disagree

Why do you say this? Please write in the box below.

How far do you agree or disagree with our proposal to re-order the priority of the oversubscription criteria, from September 2026? Please tick a box.

Strongly agree Agree Neither agree or disagree

Disagree Strongly disagree

Why do you say this? Please write in the box below.

Are there any other comments or suggestions you would like to make to help us with this decision and in planning for the future provision of the children? Please write in the box below.

We would like to hear from many different people as your views help us to decide whether or not we make these changes. We will also use any personal information to understand how different groups of people feel about our proposal to change the catchment area of Marshland High School, from September 2026.

We will process any personal information we receive from you in line with the General Data Protection Regulation (GDPR) (Regulation (EU) 2016/679), the Data Protection Act 2018 and Norfolk County Council's data protection policy and guidelines. This means that Norfolk County Council will hold your personal data and only use it for the purpose for which it was collected, being this consultation.

We won't identify individuals when reporting back our findings and under our record management policy we will keep this information for five years. We will also, under normal circumstances, not pass your personal data on to anyone else. However, we may be asked under access to information laws to publish or disclose some, or all, of the information you provide in response to this consultation, including any personal information. We will only do this where such disclosure will comply with such relevant information laws which include the Freedom of Information Act 2000, the Data Protection Act 2018 and the Environmental Information Regulations 2004.

Please tell us who you are, (tick all that apply):

- | | |
|---|--|
| <input type="checkbox"/> Pupil | <input type="checkbox"/> School governor |
| <input type="checkbox"/> Parent / Guardian | <input type="checkbox"/> Local resident |
| <input type="checkbox"/> Member of the Parent Teacher Association | <input type="checkbox"/> Local business |
| <input type="checkbox"/> Member of staff | <input type="checkbox"/> Local sports group |
| | <input type="checkbox"/> Local community group |

Other (please specify): _____

At which school? _____

What is your postcode? _____

Your views will help us decide if this proposal goes ahead. You can tell us your views by returning this completed form:

To the meeting for parents, carers and other interested members of the community:

- 12th December at 4pm, at Marshland High School.

By completing:

- the short google form online survey <https://forms.gle/CfCAqGUrCcBifMYh8>
- this completed form and hand into the school office.
- Or by email to consultation@marshlandhigh.co.uk
- Or write to Marshland High School c/o Admissions, School Road, West Walton, Wisbech, PE14 7HA

This consultation ends on 15th January 2025